

AS200 Quick Installation Guide

Hardware Installation Step by Step

Please use the numeric keypad on the cabinet to access and navigate through the configuration menu. **(Default password code: 1234)**

Use the following key to confirm, to cancel or to select

#: To Confirm

***: To Cancel**

0: To Select

Define AS200 identification number (ID)

The default ID for AS200 is **0001**. Please assign to a different value if you want to integrate with existing AS200 controller(s). *This value must be UNIQUE for the correct operation.*

Define AS200 communication protocol

Please select the communication protocol it can be RS485 or Ethernet. The default value is set to **RS485 57600bps**.

Define AS200 door authentication method (working mode)

Please select between four different working modes with cautious because it determines how the cardholder will be authenticate through door(s). *To change the working mode afterward requires AS200 to reset to factory default value.* The default value is set to **One-way control**.

Type of door authentication methods

- *One-Way control*: Each door requires single card reader for entrance purpose. For additional two doors (DoorC & DoorD) an expansion I/O module is required.
- *Two-Way control*: Each door requires dual card reader for entrance and exit purpose.
- *Mixed control*: One door is using single card reader for entrance purpose and the second door is using dual card reader for entrance and exit. Using an expansion module a third door (DoorC) can be added using single card reader for entrance.
- *One-way traffic*: The doors are configured in a single way direction for authentication, for e.g. Biohazard Lab, Intensive Care, etc. It's suitable for a secure environment, where security has the highest priority. Using an expansion module two additional doors (DoorC & DoorD) can be added.

Below is a brief description how and where each card reader should be placed.

Work mode	Door A		Door B	
	IN	Out	IN	Out
One-way control	Wiegand A	Button	Wiegand B	Button
Two-way control	Wiegand A	Wiegand C	Wiegand B	Wiegand D
Mixed control	Wiegand A	Button	Wiegand B	Wiegand D
One-way traffic	Wiegand A	Non	Wiegand B	Non

Using an optional expansion module to add Door C & Door D

Work mode	Door C		Door D	
	IN	Out	IN	Out
One-way control	Wiegand C	Button	Wiegand D	Button
Two-way control	Non	Non	Non	Non
Mixed control	Wiegand C	Button	Non	Non
One-way traffic	Non	Wiegand C	Non	Wiegand D

Pin definition to connect a Wiegand-based card reader (Max. 4 units)

- 12V: +12V Power Supply
- D0: Wiegand Data-0 output
- D1: Wiegand Data-1 output
- GL: Green LED input
- RL: Red LED input
- BZ: BEEP input
- GND: GND of the Power Supply

Steps to reset AS200 to factory default value

1. Remove the jumper cap from JP10
2. Press Reset button
3. Replace the jumper cap back to JP10

Default AS200 system parameters value

Parameter	Value
Time	2006/11/20 12:00 GMT+8:00
AS200 ID	0x0001
Work mode	One-way control
Password	1234
Cardholder & Entry log	0

Note: after reset, please download all the information from AS Server back to AS200

Digital Input & Output Relay connection

On AS200 Logic Board contains two sets of DI/DO, which includes connections for four digital inputs, three digital relay outputs and one power connector for alarm or electronic lock.

- Digital Inputs (located beneath Geovision's Logo)
 - Sensor 1/2 (E.g. Door Status Sensor)
 - Button 1/2 (E.g. Door Release Button)
- Digital Inputs (located above GeoVision's Logo)
 - Fire (E.g. Fire Sensor)
 - Force (E.g. Force Entry or Tamper Detection Sensor)
 - GND (Grounding)
- Digital Output (located beneath Geovision's Logo)
 - Urgent 1/2 (E.g. Emergency Door Release)
 - Door +/- (E.g. Electric Lock)
 - Alarm +/- (E.g. Siren)
- Power Connector (located beneath Geovision's Logo)
 - Power +/- (Provide DC 12V for electric lock or alarm)

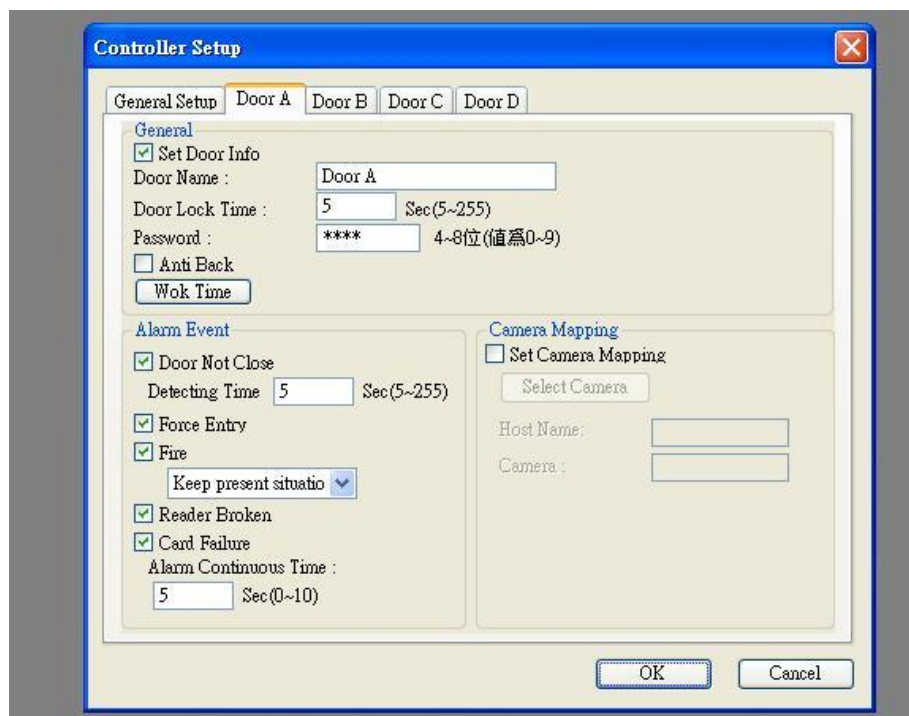
Important notice: It is essential to determine the input device type between **dry contact** or **self-powered with 12V**. It is also necessary to find out the normal state of the device, it can be an **open circuit (N/O)** or **grounded circuit (N/C)**. Please use the Dip Switch to make the appropriate selection.

- Note 1:** If the electric lock (*Door+/-*) is a grounded circuit type (N/C) then the emergency door release (*Urgent 1/2*) must be configured as N/C as well!
- Note 2:** In case the emergency door release (*Urgent 1/2*) is not connected, please close the circuit.
- Note 3:** If the electric lock (*Door+/-*) and siren (*Alarm+/-*) are using dry contact connection,
Please connect Urgent1 and Door+ for Door relay
Please connect Alarm+ and Power+ for Alarm relay

AS200 LED description

	Light On	Flashing
Green LED	Door Open	Alarm: Door Hold Open
Yellow LED	Door Release Button active	
Red LED	Fire Sensor active	Alarm: Tamper Sensor active

Software Installation Step by Step



- *Door Lock Time*: When the time expires, the electric lock will be active
- *Password*: Use the numeric keypad to open the door
- *Anti Back*: Anti-Passback function works in Two-way Control only!
- *Work Time*: Cardholder's authentication method in a specific time range.
 - § Release mode: No restriction. The electric lock is inactive
 - § Card or Keypad mode: Use card or door's password for authentication
 - § Card and password mode: Use card and cardholder's personal password
 - § Card Mode: Use card for authentication
- *Alarm Event*: Define which event(s) should be report and/or sent alarm
- *Door Not Close*: When the time expires, and the door is still open the alarm will be active until the door is closed
- *Force entry*: When the door is being entered brutally or emergency door release (Urgent+/-) is being pressed the alarm will be active
- *Fire*: When the fire sensor is active, the alarm will be active
 - § Keep present situation: The door(s) remains the present situation
 - § Fire open mode: The door(s) will be opened
 - § Fire lock mode: The dooe(s) will be locked
- *Reader Broken*: When the card reader is being tampered (Force) the alarm will be active
- *Card Failure*: When the card is being denied, the alarm will be active until the time expires
- *Camera Mapping*: Select which camera should be mapped to a specific door.

System Overview

Hardware Specification

Power Supply		AC110~250V
Controller Door Number		Max four door
Cardholder capacity		10000
Off-line Data		Keep last 10000 entry records
RF Reader w/Wiegand interface		Max. 4 devices (Code format support 26~40 bits)
Communication		RS485 57600bps/Ethernet(Option GV-Ethernet V2)
Digital I/O	Input	(2) Door Status Sensor (3) Button to Door Open (4) Fire Sensor (5) Tamper Detection
	Output	(1) Electric lock (2) Alarm (3) Emergency Door Release (4) Power connection for electric lock and alarm

AS200 system parameters value

Parameter	Value
Time	2006/11/20 12:00 GMT+8:00
AS200 ID	0x0001
Work mode	One-way control
Password	1234
Cardholder & Entry log	0